

SMOKE SIGNALS ALONG THE LAKE

www.legendlake.info

Summer 2023 Volume 73



Legend Lake Icon
the man behind
the fire trucks



Tom Van Lieshout
June 6, 1947 - April 2, 2023

A Newsletter of the Legend Lake Property Owners Association
and Legend Lake Protection & Rehabilitation District



A Memorial to

Tom Vanlieshout





All Articles are Unedited and Printed as Submitted

Table of Contents:

Directors & Commissioners5
 Presidents Report7
 Beach Club8
 Compost Site.....12
 Administrative Report.....14
 Chairman’s Report18
 Lake Fair20
 Boaters Safety23
 Tom Van Lieshout Story29
 My Dad/ Tom Van Lieshout33
 Sheriff35
 Emergency Management38
 Timberland Invasive Partnership44
 Wis Burn50
 Social52
 Condolences60
 Classifieds.....62
 Welcome New Owners.....64
 Mosquitoes & Ticks66
 Light Pollution68

Legend Lake Property
 Owners Association
 N1024 Old South Branch Road
 P O Box 759
 Keshena, WI 54135
 715-799-3317
 llpoa@legendlake.info
 www.legendlake.info

Legend Lake Protection &
 Rehabilitation District
 P O Box 95
 Keshena, WI 54135
 715-799-3080
 llprd@legendlake.info
 www.legendlake.info



Layout & Printing
 Christensen Printing &
 Publishing, Shawano

Cover photo courtesy of
 the Van Lieshout Family



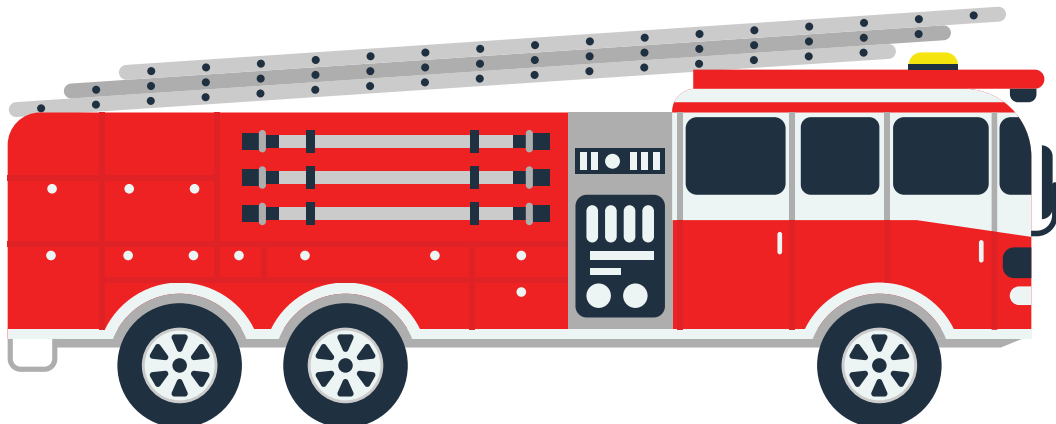
❧

MISSION STATEMENT

OF THE
LEGEND LAKE
PROPERTY OWNER'S ASSOCIATION



Legend Lake Property Owners Association is a non-profit organization dedicated to preserving and protecting Legend Lake's natural beauty, habitats and its various recreational and residential opportunities. Our work is to promote and protect the best interest and use of all members, boaters, and fishermen and all other parties that use the water and land.



DIRECTORS & COMMISSIONERS

Legend Lake Property Owners Association

Board of Directors

Steve Kastning – 715-851-3536

President

s.kastning@legendlake.info

Property Sales, Architectural, Building & Ground

Arland Dillenburg – 715/853-9747

Vice President

a.dillenburg@legendlake.info

Nominating, Beach Club, Camping, Forestry & Out Lots, Intergovernmental Liaison, Purchasing

Shelley Williams – 715/853-4584

Secretary

s.williams@legendlake.info

Communication, Personnel, Roads & Security, By-Law & Legal, Finance, Intergovernmental Liaison, Nominating

Stan Wilson - 715/799-4480

Treasurer

s.wilson@legendlake.info

By-Laws & Legal, Finance, Purchasing

Tim Andersen - 715/853-4430

t.andersen@legendlake.info

Architectural, Buildings & Grounds, Purchasing, Property Sales

Steve Savage

s.savage@legendlake.info

Forestry & Outlots, Intergovernmental Liaison, By-Laws & Legal, Communication, Personnel

Robert Cluka

r.cluka@legendlake.info

By-Laws & Legal, Property Sales, Roads & Security

Karen Bowman-Dillenburg – 715-851-8088

k.dillenburg@legendlake.info

Beach Club, Communication, Finance, Intergovernmental Liaison, Nominating, Personnel

Dave Santkuyl-715-853-6954

Architectural, Beach Club, Camping, Building & Ground

Legend Lake Protection & Rehabilitation District

Commissioners

Tom Ittner - 715/799-4253

Chairman

t.ittner@legendlake.info

All committees

LLPRD Representative to WAMSCO, the Local Emergency Planning committee, TIP, Local Conservation Committee

Jeremy Johnson

Vice Chairman

j.johnson@legendlake.info

Lake Management Chairman, Personnel, Legal

Kristin Allen – 715/903-6520

Secretary

k.allen@legendlake.info

Responsible Boating, Communication, Election Chairman

Thomas Moutvic - 715/799-3154

Treasurer

t.moutvic@legendlake.info

Legal Chairman, Personnel Chairman
Adopt-A-Shore, Safe Boating Brigade

Robert Clark – 715-799-3030

r.clark@legendlake.info

Storage Building Chairman, Fish

Gregg Malmstrom – 414-807-4162

g.malmstrom@legendlake.info

County of Menominee Representative

Denise Gilane

d.gilane@legendlake.info

Town of Menominee Representative



Be confident in your home sale with Shorewest REALTORS.

Let our knowledge and enthusiasm of this
exceptional lake go to work for you.



Dan Ludwig, Broker / Owner
dludwig@shorewest.com
(414) 254-5851

ShoreWEST
REALTORS®



LLPOA – PRESIDENT’S LETTER

Summer- When the days get longer, the stars shine brighter, your hair gets lighter and the water gets warmer, the music gets louder and life gets better.



Have a great Summer!!!

Steve Kastning

President

STUMP GRINDING



SANFORD AND STUMP

Call or text Sanford Straw for a free quote

262-549-3255

Your Legend Lake Grinder

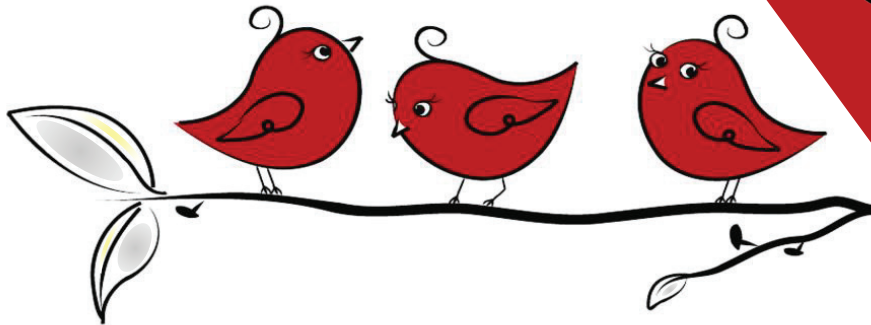
N1159 Spotted Fawn Trail

Email: sanfordandstump@gmail.com

Satisfaction guaranteed

Three Lil' Birds

Consignment Shoppe



SHAWANO, WI | 134 S Main Street
(715) 201-0326

GREEN BAY, WI | 340 N Military Ave
(920) 434-3616



Consign with us! No need to go to the marketplace and have potential buyers visit your home!



Get extra cash! Or even use as credit in the store – basically, 'free' money!



We offer 50/50 split, and 70/30 on handmade items.

ThreeLilBirdsConsign@yahoo.com

Hours:

M-F 10-5

Sat 10-4

Sun Closed

Clothing | Handbags | Jewelry | Shoes | Furniture | Household | ...and more!



BEACH CLUB



BEACH CLUB CONDITIONS & CONDUCT

Legend Lake Property Owners Association
Board of Directors - Revised 7-08-16

- Use
 - Beach Club use is restricted to property owners assigned to that Beach Club and are members in good standing.
- Conduct
 - Respect the rights of fellow members and share the beach club respectfully.
- Camping
 - Camping is not permitted on the Beach Clubs.
- Docks
 - At least one dock will be provided per Beach Club by the LLPOA. The Association is responsible for maintaining the dock, including removing them in the fall and replacing them in the spring if required. Private docks are not allowed. Dock are for loading and unloading of watercraft only.
- Fences
 - Fences will be maintained by the LLPOA with no opening larger than 30" unless deemed necessary by the Board Of Directors.
- Fire
 - No campfires/ or open fires are allowed on the Beach Clubs.
- Maintenance
 - Maintenance must be done by the LLPOA. Beach Club members are not allowed to cut trees or vegetation. Beach Club members cannot remove sod or other vegetation.
- Pets
 - All pets must be leashed or caged on Beach Clubs.
- Personal Use
 - All Beach Club areas are for common use. Staking out of personal areas is not allowed.
- Picnic Tables
 - The LLPOA will supply each Beach Club with one picnic table and is responsible for maintaining it. Portable tables are allowed as long as they are removed daily.
- Shoreline Regulation
 - The same restrictions placed on the on-shore owners regarding shoreline regulations governed by the Legend Lake Protection and Rehabilitation District, Wisconsin Department of Natural Resources, and the County ordinances also apply to the Beach Clubs and will be enforced.

Structures

- o All structures on a Beach Club must be for common use of all Beach Club members. No boat lifts, private pier, floating structure, or similar structure will be allowed. Any structure in violation of any of the rules will be removed. In order to reclaim the watercraft from the LLPOA, all costs associated with the removal and storage must be paid in full to the LLPOA.

Vehicles

- o No motorized vehicles are allowed on the Beach Clubs. Exceptions for vehicles required by disabled people will be granted by the LLPOA Board of Directors. Contact the Lodge Office for requirements needed to obtain a permit.

Watercraft

- o Watercraft are defined as a pontoon boat, personal watercraft, boat, paddle boat, canoe, kayak and/or any other craft in or on the water.
- o All watercraft kept at the beach club must be registered with the LLPOA and must display 2 stickers placed next to the Wisconsin boat registration numbers. Guests watercraft are not allowed extended docking and do not require registration. Beach Club registration for the watercraft and the stickers must be done at the LLPOA Lodge.
- o Mooring of water craft can be done with a maximum of 2 shoreline posts. These posts

must be readily visible and must not create a hazard to other Beach Club members. The posts must be a minimum height of 24". They must be at least 4" in diameter, or 4" x 4" if square. These posts must be marked with the lot number and in addition the member owns for identification. That post is not exclusive to that member as all areas on the beach club are common all members assigned to that beach club.

- o Mooring to the dock at the Beach Club is not permitted. Docks are only for loading and unloading of watercraft.
- o All watercraft must be kept at least 12' from the dock to allow members access to the water and allow room for swimming and other water recreational activities.
- o Any unregistered watercraft that is moored for extended periods at the Beach Club, or if not kept at the members designated beach club, will be removed by the LLPOA. Any watercraft in violation of the above regulations may also be removed. In order to reclaim the watercraft from the LLPOA, all costs associated with the removal and storage must be paid in full to the LLPOA.
- o Any watercraft kept at the appropriate Beach Club will be the responsibility of the owner of the watercraft. The LLPOA is not responsible for any damage, theft or other mishaps occurring to, or by, the watercraft.

BEACH CLUB USERS

Do you want to make changes or improvements to your beach club?

The Beach Club Committee will be meeting monthly over the summer season with beach club users to hear how you want to do this.

Each Beach Club will be heard individually to determine what you want to do to make **your** beach club better.

4th Saturday of the month

10am-noon

Storage shed by the Dam-Bring a lawn chair

The Legend Lake Property Owners Association-Beach Club Committee

Brady's

SEPTIC SERVICE

"Your Septic Specialist"

www.bradyseptic.com

MPRS 227741

- Complete Septic Systems
- Septic Pumping • Perc Tests
- Conventional Systems
- Real Estate Septic & Well Evaluations
- High Pressure Jetting & Roto-Rooting
- Winter Thawing
- Complete Water Well Repair and Submersible Pumps



Contact Us.

Gresham: 715-787-4152

Shawano: 715-524-3000

Clintonville: 715-823-PUMP

W12366 Cty. Rd. G | Gresham, WI 54128



Go2Girl

SERVICES

PERSONAL CONCIERGE &
ERRAND SERVICE

PERSONAL CONCIERGE

Effective lifestyle management, for time well spent!

- House watch/check
- Lawn Maintenance
- Cottage open/close services
- Errands & Personal Shopping
- Repair / Delivery waiting services
- Gather contractor quotes
- Estate Assistance

Don't see what you need, no problem.
All services are completely customizable.

BUSINESS ERRANDS

Keep your skilled resources on the job and leave the small stuff to me!

- Pick up/Drop off services
- Delivery/Courier services
- Realtor assistance
- Waiting Service for job site deliveries

Recruitment, retention of employees, and time restraints are listed as top small business challenges. Consider a non-fixed cost to help you meet your customer commitments.



ON-DEMAND ERRANDS

Sometimes things just happen,
Almost any task, just ask!

ALMOST ANY TASK, JUST ASK!

SCAN TO BOOK
ONLINE



414-914-7780
SONIA@GO2GIRLWI.COM
WWW.GO2GIRLWI.COM

SERVICE AREAS: SHAWANO LAKE & LEGEND LAKE

COMPOST SITE

COMPOST SITE 2023

Location: On Silver Canoe Road, off Highway VV east

Dates and Times: Saturday, April 15, 2023 – FIRST DAY OPEN FOR THE SEASON

April and May – Saturday’s – 9:00 a.m. to 4:00 p.m.
Wednesday’s – 10:00 a.m. to 4:00 p.m.

**June thru September – Saturday’s – 10 a.m. to 2:00 p.m.
Wednesday’s – CLOSED**

October and November – Saturday’s – 9:00 a.m. to 4:00 p.m.
Wednesday’s – 10:00 a.m. to 4:00 p.m.

Saturday, November 11, 2023 – LAST DAY OPEN FOR THE SEASON

Prerequisites: Must be an Association member in good standing.
\$45.00 per calendar year fee

Materials Not Allowed: Stumps
Construction materials
Treated wood
Garbage, paper, cans, etc.

Change:

For your convenience you may submit your compost site payment with your Annual dues payment. Just **mail the completed form** below. You will be issued a new Compost tag for 2023. Once your compost site payment has been received, your Compost tag for 2023 will be mailed to you prior to the site opening.

*In order to maintain equity in the distribution of recyclable materials, hauling & loading will be limited to **HAND TOOLS ONLY!!!***

*Attention: Compost Site Manager has the option to vary the schedule due to weather conditions. Call the Lodge for verification if weather conditions are questionable. 715/799-3317

Dumping leaves and/or brush in the forested areas and outlots of Legend Lake is prohibited by both State and County laws. To avoid penalties of this kind, use the Compost Site operated by the Association for the convenience of its members.

Leaves must be emptied from plastic bags and the bags taken with you. Do not place branches in the leaves. The attendant on duty will determine the acceptance or rejection of any materials in question.

Brush brought to the site is chipped and is available to members in good standing. Since the chips and compost (black dirt) are quite popular, we request that you take only what you will use on your property at Legend Lake. Quantities may be limited, at discretion of the Compost manager.

Grass clippings must be spread out – not left in clumps or piles. Separate pine from hardwoods and place in appropriate piles. Brush over 4” is to be placed in the camp fire wood pile.

---Very Important Reminders---

The LLPOA compost was originally established as a convenience and source of recycled materials to LLPOA members. Its use has grown over the years, and more and more members have been taking advantage of the site. Occasionally, we have to remind our members of simple guidelines:

1. Materials must be divided into categories and separated into those categories in order to provide the most effective and efficient use of the site.

COMPOST SITE

2. Materials such as leaves, grass, sea weed and such are set aside so as to provide a source of recycled materials such as mulch, fertilizer and top soil.
3. Wood and branches are divided into hardwood and softwood piles so as to be chipped according to the grade and hardness of the wood. As such, individuals depositing branches need to unload the branches in one of the two category piles: hardwood such as oak and softwood such as pine.
4. Only live, fresh, woody materials are capable of being chipped. Dead and dry woody materials need to be loaded into the burn area (large burn pit) where they will be burnt during the wet, snowy season under the supervision of an attendant and the DNR.
5. Wet and rotted materials and tree stumps cannot be included due to the slow burn rates and the tendency to simmer rather than burn. Please do not bring such materials to the compost site or you may be asked to leave.
6. The chipper is limited as to the diameter of the wood/branches that can be chipped. That diameter cannot exceed 4 inches. Any branches, trunks or wood materials exceeding the 4 inch diameter need be sawn before arriving at the site and upon arrival, deposited on the firewood pile.
7. Finally, please remember that the area is a COMPOST SITE established for the recycling of recyclable materials, not a dumping area for unwanted goods such as construction materials and garbage.

Your consideration in this matter is appreciated. Any questions, please feel free to contact Lodge office – 715-799-3317

***In order to maintain equity in the distribution of recyclable materials, hauling & loading will be limited to
HAND TOOLS ONLY!!!***



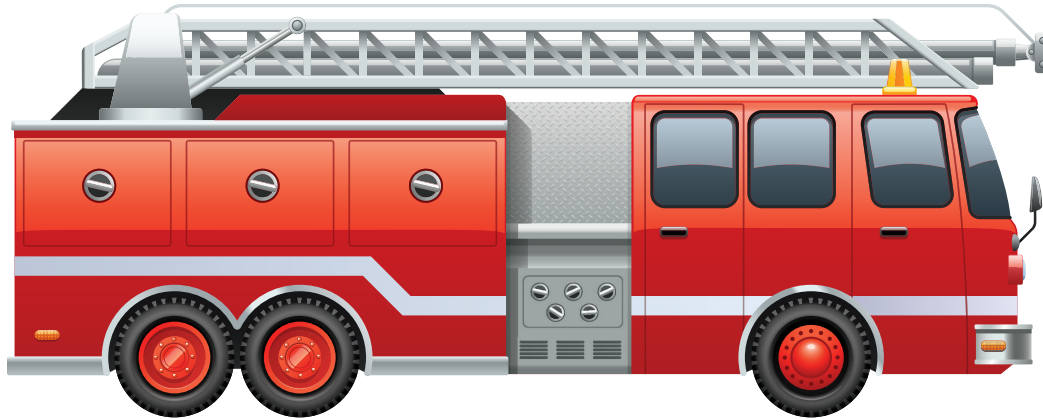
ADMINISTRATIVE REPORT

Don't Forget your Camping permit for 2023 which are required. The application needs to be completed and you will then receive the new 2023 sticker for your camping permit sign on the lot.

Compost Site Tags for 2023 are available at the Lodge office.

You need to have the annual 2023 DNR Burning Permit. Download the app at dnr.wi.gov keyword "fire", to check daily burning restrictions or call 1-888-WIS-BURN (947-2876)

Please remember to contact the Lodge office with any address changes, especially when you arrive back from you winter location. Thank you in advance for helping us to keep our records current.



The office staff is dearly saddened that the lake will no longer have Tom Van-Lieshout out on the water being "Our Fire Truck Guy". His passion of the fire truck industry made a boat ride very enjoyable for the members and their guests.

Lodge Office Staff

Anderson Heating - Cooling - Sheet Metal

Mark Anderson

920-585-1685

715-799-4490

- Heating
- Air Conditioning
- Water Heaters
- Duct Work
- Expertise in Sheet Metal
- Free Estimates



Living on Legend Lake
I can be there in a Flash!

Full Service, Repairs, Maintenance,
Cleaning and New Installations
From a Professional

EST. SINCE 1967

"Trust in a Pro"

Mick's Watercraft

Winterizing & Storage

- Service, winterization, and storage available for all types of watercraft:
 - Outboards -Inboards -I/O
 - PWC -Pontoons -V-Drive
 - All kinds of watercraft!
- Indoor storage and outdoor shrink-wrapping storage available.
- Outboard engine installation and engine upgrades available:
 - Honda -Mercury -Evinrude
 - 2-Stroke -4-Stroke -etc.
- Oil, filters, batteries, and much more marine parts and supplies available for purchase. Contact Mick for pricing.

Mick Siolka

Shawano, WI 54166
(715) 853-6588
(715) 524-5299

Mick's Watercraft is built first and foremost on providing exceptional customer service.



PONTOON BOAT VINYL REFLOORING NOW AVAILABLE!



- Give your pontoon a fresh clean new look
- Reduce mold, mildew, and overall moisture
- Increase overall value of your pontoon boat.
- Contact Mick to schedule a time to get your pontoon deck refloored with vinyl.

NATIONWIDE AWARD WINNER IN SALES AND SERVICE

AMERICAN WOW & MARINE Store MOTORSPORTS

*Dreaming About
That Boat AGAIN?* 

We've Made Thousands Of
Dreams Come True at
American Marine & Motorsports.

Boat & Pontoon Show

Larger Than Most Boat Shows & We Sell For Less - GUARANTEED!

**7 DAYS
A WEEK!**



MEMBER
BETTER BUSINESS
BUREAU

LARGEST SHOWROOM IN THE U.S.A.



Crownline • Malibu • Axis • Stingray • Manitou





Misty Harbor Pontoons • Alumacraft • Mirrocraft



Honda • Mercury • Evinrude • Suzuki • Yamaha



OVER 1400 ON DISPLAY!

Honda • CF-Moto • Vanderhal • Mahindra/Roxor Off-Road

830 E. Green Bay Street • Shawano, WI

866-955-BOAT (2628)

www.americanmarina.com

info@americanmarina.com

American Marine Super Center	HHH	N W	E S
	Service & Parts Center	Green Bay St.	To Hwy 29
★	Fair Grounds	Hardees	Waukechon
★	Fairview		

NATIONWIDE AWARD WINNER IN SALES AND SERVICE!

CHAIRMAN'S REPORT - SUMMER 2023

Hello Lake District Members,

Spring is finally here and Mother Nature is putting her touch on our Legend Lake surroundings. The land is coming alive from the long Winter sleep with vibrant colors, as the flowers, grass, woods all come alive with new growth. I'm seeing many varieties of birds looking for food and making nests. Now that the ice has melted the lake also starts changing. The Aquatic plants, both Native and Non-Native start growing and compete for their share of the Lakebed bottom. Also, other Aquatic life becomes more active. All the varieties of Fish become active feeding and spawning, as well as all the other amphibians that occupy are Lake. Ducks, Loons, Muskrats, a few Beavers and others all use the Lake as their home. We as Lake District members share the Lake with a world of Aquatic Habitat.

The Lake District tries to control the Aquatic Invasive Species (AIS) Eurasian Watermilfoil (EWM/HWM) and Curly Leaf Pondweed which are the two that have populations in our Lake System. As I mentioned in the Spring Report, the Lake District Board put an application permit into the DNR for an herbicide spot treatment of 46.64 acres of Eurasian Watermilfoil (EWM/HWM) in areas rated most dense. The herbicide is called ProcellaCOR which has demonstrated the highest success of eliminating EWM/HWM with the lowest EWM/HWM regrowth occurrences, and minimal impact to native species. The DNR approved the Board's application and issued a permit subject to the approval of The Tribal Legislature. The permit application was presented to The Tribal Environmental Services for analysis and recommended approval before being presented to The Tribal Legislature for permit approval which was passed on May 4, 2023. With all the approvals in place the herbi-

cide spot treatments will take place when the prescribed temperature guidelines are achieved in late May.

The Clean Boat Clean Water Inspectors will be out again this year inspecting incoming and outgoing water vessels looking for aquatic plant life on boat trailers and boats. They will be out at the three public boat launches on the weekends inspecting boats, trailers and providing educational materials about the different Aquatic Invasive Species.

Another way to control EWM/HWM is the mechanical harvesting to reduce navigational and recreation impediments throughout the Legend Lake waterways. By effectively cutting the EWM/HWM, harvesting reduces the amount of EWM/HWM that would be disturbed and left suspended in the water column from boats traveling through the aquatic plant beds. After harvesting a bed, the harvesters collect as many plant fragments as possible that may have been created during the harvesting. Since fragmentation is one mechanism through which EWM/HWM spreads, reducing the amount of dislodged vegetation from both harvesting and boat traffic is crucial to AIS control. This is where Lake Members can be a BIG HELP in raking and clearing their beach front properties an any fragments of EWM/HWM, so they don't propagate.

The Boater's Safety Class will be the week of June 19-23, 2023. Sign up at the Lodge Office, see Thomas or Lisa. This is a hands-on opportunity to experience all of the safety features and rules involved with Boating of all types of vessels. The water day of this one-week class is a great experience for the young adults to have a chance to operate various types of water of watercraft

safely. We have a group of great instructors led by Sue Thoma with help from many parents and /or grandparents.

The Responsible Boating Committee has been developing Safety rule videos, signs, flags, maps, brochures and many more ideas. The Committee is looking to present many of their ideas and informational Responsible Boating tips at the upcoming Lake Faire on August 19, 2023.

The Lake District will be doing the boat launch repair at the Lodge in mid-June in the middle of the week when there is the least use of the launch. All other two public boat launches will have some minor repairs as well. We believe that none of the boat launches would be unserviceable for more than one day. Of course, our plans depend on the weather cooperating. Just a reminder, please help the Lake District by not power loading your boats into trailers and remind your friends and guests to not power load boats.

I'm looking forward to seeing everyone on the Lake again this Summer.

Please Boat Responsibly!

Be Well! Be Safe!

Tom Ittner, Chairman
Lake District



WE'RE HERE FOR YOU:

CALL CENTER STAFF
available 7 days a week, 7 am – 10 pm

Toll Free 1-888-WDNRINFo
(1-888-936-7463)

ONLINE CHAT at dnr.wi.gov/contact

Customer Service
Wisconsin Department of Natural Resources

WANTED: A Non-Shrinking Tax Base

*Do you own unimproved property
on Legend Lake which you no
longer want?*

Before offering such property to
any other Menominee County
entity, please contact the
Legend Lake Property Owners
Association Office
715-799-3317

IT IS YOUR SMOKE SIGNALS!

*Do you have an interesting story
about the lake?*

*Do you have some special information
that you would like to share with the
Association members?*

How about pictures you have taken of
the lake you would like to share?

If so, please type and submit your
article and contact information to the
Smoke Signals. If there is space we
will include it in an upcoming issue. It
is your magazine, so let us know what
you want to include.

Send to: llpoa@legendlake.info

Lake Fair

August 19th

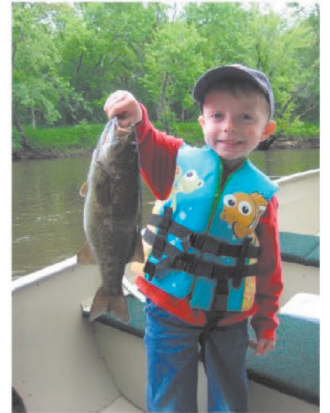
10-3 pm

Fun for the whole
family



Games,
Learning,
Food,
Crafts
and more

Prizes



*Shorelines, Tree & Stump Removal,
Lot Clearing, Landscaping,
Culverts, Driveways, Snow Plowing.*

BOVIN **EXCAVATING** **715.304.9812**



BEFORE



AFTER

Call or Text

FREE

ESTIMATES





**HOCKBERGER
HOMES**

920- 241- 5014

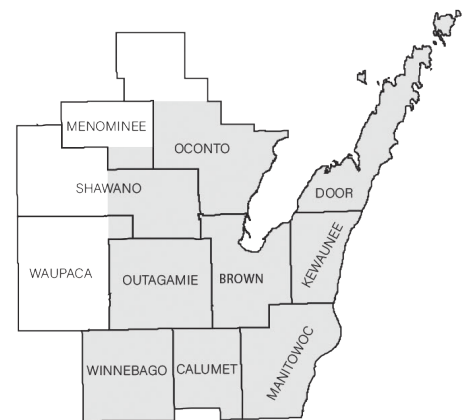
WWW.HOCKBERGERHOMES.COM



**TRANSPARENCY IN THE DESIGN
& BUILD PROCESS**

DESIGN - REMODELING - ADDITIONS - NEW CONSTRUCTION

- ⊕ 25 YEARS OF EXPERIENCE
- ⊕ IN-HOUSE DESIGN WITH 3D CAPABILITIES
- ⊕ HIGHLY DETAILED PROJECT COSTS BREAKDOWN
- ⊕ DEDICATED PROJECT MANAGER ON EACH JOB
- ⊕ ONLINE PROJECT SOFTWARE WITH CLIENT ACCESS





For more detailed information about the Responsible Boating Committee visit our page on the Legend Lake website.



2023 BOATER SAFETY CLASS »

JUNE 19-23

Location: Legend Lake Lodge

Times: Mon, Tue, Thur, Fri: 9am-12pm, Wed 9am-2pm

Volunteers are needed throughout the week. Even if you can only spare a few hours, please consider helping out. We also need volunteers owning a PWC (jet ski) and are willing to bring it to the lodge and help teach responsible use of PWC on Wednesday, June 21st.

If you can help at all, please contact us at rbc.legend@gmail.com



« CHECK OUT OUR BROCHURES!

- Brochures are available at the lodge and all boat launches
- Our brochure unfolds into a map of the lake

RESPONSIBLE BOATING APPAREL AVAILABLE FOR PURCHASE AT THE LODGE »



DNR Boater Safety Class 2023

June 19 - June 23, 2023

Location: Legend Lake Lodge
Times: Mon. Tues. Thur. Fri. 9am - 12pm & Wed. 9am - 2pm
Cost: \$10.00

This course is taught by certified, experienced DNR instructors using textbooks (included in the \$10.00 fee), demonstrations, lectures and hands-on experiences. Students will have daily homework assignments.

To register:

- Obtain a "Wisconsin DNR Customer ID" online at gowild.wi.gov or call the DNR at 888-936-7463.
- Complete the registration form below or pick one up at the lodge.
- Submit completed registration and \$10 fee to LLPRD, PO Box 95, Keshena, WI 54135

Volunteers will be needed throughout the week,
please consider assisting us.



*Thank you for making Legend Lake
safe and fun for everyone!*

Boating Safety Registration Form

Student's Name: _____
Parent's Name (s): _____
Student's Birthdate: _____ WIDNR Customer ID#: _____
Mailing Address: _____
City, State & Zip: _____
Phone: _____ County of Residence: _____
Emergency Contact: _____ Emergency Phone: _____
Lake Address: _____

Submit form and \$10.00 fee to: LLPRD PO Box 95 Keshena, WI 54135

Werner

Pest & Odor Control



Insect Control - Interior and/or Exterior Insect Control, Maintenance Services, or services detailed to meet your needs



Rodent Control - We can evaluate your situation and determine which corrective measures best suit your needs, and we offer structured rodent control programs.



Rodent Proofing - Rodent proofing is available to clients where it is more feasible to perform structural repairs as opposed to performing an ongoing control program.



Bat Proofing - Thorough inspection and evaluation to locate entrance points and correct the problem thru exclusion.

Odor Control - We offer various corrective measures for offensive odors.

Wildlife Control - Trapping and relocation of nuisance animals.



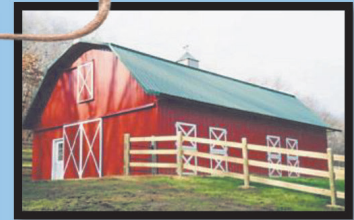
RESIDENTIAL



INDUSTRIAL



COMMERCIAL



AGRICULTURAL



WERNER

PEST & ODOR CONTROL SERVICES

PO Box 275, 916 N Main Street, Seymour

Phone: (920) 833-7774 or 1-800-339-4275

www.wernerpest.com

We service all you pest control needs!

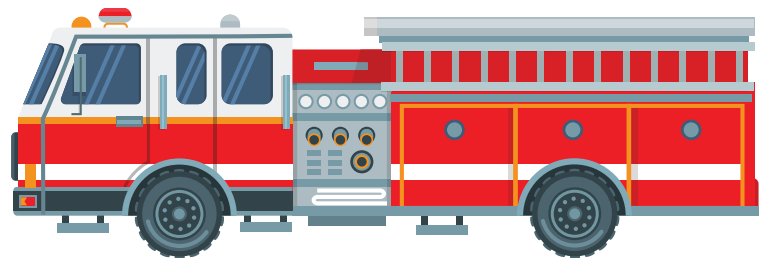


NOMINATING

This is your chance and opportunity to give back to the Lake District by volunteering for a 3 year term as a Board member by sending a brief letter of interest to LLPRD, P.O. Box 95, Keshena, WI 54135.



If you are interested, please let the Legend Lake Protection and Rehabilitation District know if you are interested and they will add your name as a candidate to the annual mailing for the Annual Meeting on August 12, 2023



Complete Asphalt Maintenance

Asphalt Repairs
Rubberized Crack Sealing
Sealcoating
Line Striping
Commercial & Residential

*Specialists by
Reputation!*



920-865-7279

www.AC-Asphalt.com

Serving NE Wisconsin for 35+ Years



COLDWELL BANKER

**REAL ESTATE
GROUP**



#1 REAL ESTATE COMPANY IN SHAWANO & MENOMINEE COUNTIES



Cheyenne Eccles
715-304-7568



Rebecca Hack
715-853-3235



Terry Hilgenberg
715-526-6148



Donna Hobscheid
715-851-5803



Layla Janssen
715-304-7193



Lynn Johnson
920-209-2283



Jim Kamke
715-853-8324



John Koeller
715-853-6677



Jim Liesner
715-853-1000



Abbi Lonick
715-304-7310



Jade Peebles
715-851-2022



Madison Priest
715-927-7111



Grant Roland
920-765-0909



Sue Sullivan
715-252-6059



Jerry Wendland
715-853-1234



Jim Zierden
715-853-8038

John Miesbauer | Managing Broker | (715) 853-1354

105 S. Washington Street, Shawano, WI 54166 | (715) 526-6148 | ColdwellHomes.com

Coldwell Banker and the Coldwell Banker Logo are registered by Coldwell Banker Real Estate LLC. Data provided by REALTORS Association of Northeast Wisconsin Multiple Listing Service and its member Associations of REALTORS, who are not responsible for its accuracy. Analysis dates are 03/01/21 through 02/28/22. Does not reflect all activity in the marketplace. Analysis results © 2022 Real Data Strategies, Inc., under license to Lalapoint, LLC and named MLS member firms. All rights reserved.



Tom's Story

Tom's love of fire trucks began at an early age. He grew up in Kaukauna. With his dad on Sunday mornings, when they would tell his mother they were going to church, they would go instead to the fire department. On a nice day, they would find the firemen sitting outside in front of the station in lawn chairs, and sit and chat with them. Then, if they received a fire call, Tom would jump in the front seat of a fire truck and go along!!!

Tom & I met in 1977; and married in 1978. He continued his love of fire trucks, and talked about his childhood fun. Small replicas of fire trucks were all he had until the mid 90s when he finally bought his first real fire truck. After a night of way too much beer, the following day the old truck from Bowler ended up in the driveway at the cottage!!!!

Of course he needed somewhere to park that truck, so the first Cleary building went up on Hwy VV. When he needed to do some work on that fire truck, he was introduced to Jerry, who was from Clintonville, and retired from Seagrave Firetrucks. That relationship continued as Tom started to buy his "fleet" of older firetrucks. Tom & Jerry were quite a team, and Tom started buying more fire trucks. He & Jerry would fix them up, get the pumps and/or aerial ladders certified, and donate those trucks to volunteer fire departments.

It was when he was having one of those pump tests done, that he started his summer-fun activity on Legend Lake. You see, when Dan P. was here to perform that test, Tom would have the truck he needed certified, parked down on the beach at the cottage. He & Dan would pump the water from the lake to test the pump. One hot summer day midweek, when the testing was taking place, a pontoon came in front of the cottage, and happened to get wet from the water spray! They thought that was so refreshing, they kept coming thru the spray. Thus, the summer fun began!!

Most hot summer weekends you would find at least one truck on our beach, and once the horn blew and the siren went off, the boats would be lined up ready to come thru. It looked like a stream of boats in a parade!! And, on the 4th of July, Tom would bring an aerial ladder fire truck to the cottage, back it in by the lake, and put up the 75 ft. ladder. Hanging from the ladder way up would be an American flag. You'd be able to see that flag flying high above the trees! Tom was very patriotic!

I'll be honest, when this summer spraying was happening, I would just be sitting on the deck with a glass of wine. That just wasn't my idea of fun, and sometimes was irritated that the fire truck was blocking my view of the lake and the peacefulness of being on the water. But, he did love spraying everyone, and everyone loved being sprayed!

I'm sure the people on Legend Lake will forever remember the "fire truck man". He surely will be missed by many.

And, he will be missed most of all by me, and our family.



Tom's loving wife,

Jan

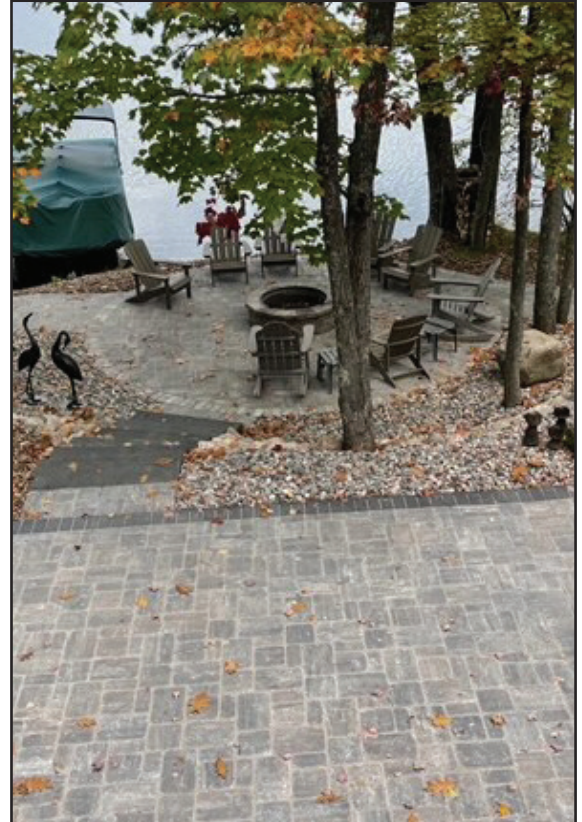
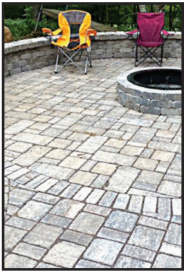


Schneider & Sons Landscaping Inc.

John & Angie Schneider, Owners

Family Owned & Proudly Serving Our Lake Customers For 27 Years!

Permeable or Standard Paving Systems
& Customized Fireplaces



Step Systems



Shoreline Restoration



- Shoreline Restoration Specialists Using Stone, Biologs or Cellular Confinement
- Required DNR & County Permits
- Erosion Control Certified
- Permeable Paving Systems & Traditional Paving Systems
- Custom Made Fireplaces & Firepits
- Stone & Block Retaining Walls



From Shoreline to Lake Home, We Do it All!



Creating Outdoor Living Spaces

Member of:



**Wolf River
Builders
Association**
and
**Wisconsin
Builders
Association**
www.wisbuild.org

**Shawano
Chamber of
Commerce**
and
**Wisconsin
Independent
Business
Owners
Organization**

**Pick-up of Bulk
Landscape Materials
Available Saturdays**

- Mulch in Colored,
Hemlock, Hardwood
- Natural Decorative Stone
- Gravel • Field Stone
- Topsoil

OPEN SATURDAYS 8 A.M. - 12 P.M.

*Retail Center Located on HWY R in Cecil
across from Golden Sands Golf Course*
434 Lake Drive, P.O. Box 142, Cecil WI 54111

www.schneiderandsons.com

Office: 715-745-2171 | Angie's Cell: 715-853-8754

ams4kjs@hotmail.com  Schneider and Son's Landscaping



My Dad

Tom Van Lieshout, my Dad, The Fire Truck Guy on Legend Lake. The most amazing man with the best sense of humor and a heart bigger than anyone I've ever known. So honored to share stories about him in Smoke Signals but quite honestly I'm still in denial that he has passed.

So who is this crazy guy who puts fire trucks on the beach? Well Dad has always had a knack for doing something unique. He seriously is one of a kind. I will never forget when I was in high school and Dad said he brought a fire truck. Cool! Then he bought a second one...um ok. And then a third one...what on earth is this guy doing? He was growing his love of fire trucks into a passion that would bring so much joy to others.

Dad was a hard worker – ALWAYS. He owned Furnishings Unlimited in Appleton and never skipped a beat even when adding fire trucks to the mix. He had a certain way to get things done (his way) and gosh darn it that was the ONLY way...even if others knew of a better way. He made the decisions, he made the rules. He was tough. As a high school student at this time, following Dad's rules and his way (including a crazy early curfew), you can imagine how fun that was for me. Whew! But those tough rules and lessons made me into the person I am today and I couldn't be more thankful.

When I was a kid, I remember Saturday mornings going into work at Furnishings Unlimited and having breakfast with Dad, just the two of us. For the past 10 years or so, my kids got to experience that similar feeling by going to the fire shop with Grandpa. Henry (age 7 – actually named after Dad – Henry Thomas) struggles most with who's going to help Grandpa fix the trucks the "right way" (i.e. Grandpa's way) and who's going to help bring trucks into town to fill up with gas and get cheese curds. These memories...the feels...the hugs of Dad wrapping around us every time we talk about them.

The past couple of years, if you came thru the fire truck spray, you likely saw my son Henry helping my husband Tim spray the boats. Henry was manning the truck nearly on his own at the age of 5. He thinks he knows it all now...well wait...he does because his Grandpa taught him the ins and outs of it all!

Family was the most important thing to Dad. Not just the kids but also his grand dogs. No article can be shared about Dad without mentioning his love for these dogs. Cooper was our first Golden – was Grandpa's pal. Sadly Cooper crossed the rainbow bridge about 4 years ago but that's one of the first things my kids said when Grandpa passed....he's now with Cooper. We currently have 2 Golden Retrievers, Murphy and Myla. They still are confused why they don't have popcorn kernels to lick up when coming into the Cottage or why Grandpa isn't sitting on the dock ready to throw a ball for him. But when seeing the dogs loving life at the cottage in the sand, on the boat, relaxing on the deck, I'm reminded that it's because of Dad that they too have this happy place up north.

Being at the cottage helps fill the incredible void that we have without Dad. His presence at the lake is incredible. I feel him all around me up here (and hear him reminding me to keep weeds pulled). Every time I hear or see a fire truck, I feel Dad saying hi. While spraying the boats sadly is likely a thing of the past, the memories we all have of Dad, this crazy fire truck guy, will live on forever.

Love and miss you beyond words Dad.

Trisha



Jake Reinke

Thinking of selling? **LIST WITH ME AT JUST 4%!**



- Legend Lake home values still on the rise!
- Low 4% listing fee
- Full MLS listing for maximum exposure



Like and Follow Me at
"Jake Reinke - Full House Realty"

FREE

MARKET ANALYSIS!

FULL HOUSE REALTY

1468 E Green Bay St • Shawano, WI 54166
fullhourealitywi.com

CALL OR TEXT ANYTIME:

JAKE REINKE

715-853-2075

jake@fullhousewi.com



OFFICE OF THE SHERIFF

Menominee County, Wisconsin

W3269 Courthouse Lane
P.O. Box 190
Keshena, WI 54135-0190

Phone: 715-799-3357
Fax: 715-799-3595

Sheriff Rebecca Smith

Chief Deputy David Kristof

Dear Property Owners,

Summer 2023

We hope everyone enjoyed their winter and their spring cleanup. Welcome Summer!

Patrol-

There has been a rise in suspicious activities reported around the lakes and wooded areas. We ask if you observe suspicious activity, report it to the Dispatch Center at 715-799-3881 or 911 for emergencies.

Our agency continues to have extra patrols for speed/ highway safety issues in several areas of the county.

The Sheriff's Office continues to participate in monthly activities with Youth Services to help enhance our relationships with the area youth.

Boat patrol- We currently do not have any applicants for boat patrol and will have to fill open shifts on the lake with overtime with the deputies.

Promotion- We would like to congratulate Deputy Clint Gourley on his promotion to Sergeant within the Sheriff's Office upon Sgt. Isom's retirement. Sgt. Gourley has been with the Sheriff's Office since 2021. Prior to working at the Sheriff's Office, Sgt. Gourley worked at the Stockbridge/ Munsee Police Department for twelve years. Please welcome Sgt. Gourley when you see him out in the community.

New/ Outgoing Personnel-

In May, our senior Sergeant, Colin Isom retired from law enforcement. Sgt. Isom has worked for the Menominee County Sheriff's Office for almost twenty years! Sgt. Isom also started and maintained the Drone Unit for the Sheriff's Office. Sgt. Isom started his law enforcement career in the Army as a military police officer. He worked in Oklahoma as an officer prior to joining our team in late 2003. He truly has been an asset for our community and we will miss him dearly.

We hope to fill the current open dispatch position prior to summer and be fully staffed in the communications center.

In March, Deputy Terrell Waukau joined the Sheriff's Office. Deputy Waukau has prior law enforcement experience with the Menominee Tribal Police Department. Please welcome Deputy Waukau when you see him in the community.

Reminders:

*If you have not registered your alarm, please do so immediately. The forms may be found on the Menominee County website under the Sheriff's Office.

*The Sheriff's Office is open from 8:00am- 4:30pm, Monday through Friday. In case of an **emergency**, please dial **911**. For **non-emergency** calls, please call our County Dispatch center at **715-799-3881**.

Please remember my office doors are always open for question or comments regarding our agency. I may also be reached by email at rsmith1201@co.menominee.wi.us

Respectfully,

Sheriff Rebecca Smith

Menominee County Sheriff's Office



Sgt. Gourley



Sgt. Isom

RENTALS

Snowmobile & Watercraft
Largest Rental Fleet in the State!



Outboard Motors



Snowmobiles

WOW!

Rentals on or off Beautiful Shawano Lake



Waverunners

Spring • Summer
Fall • Winter

Waverunners • Pontoons
Ski & Fishing Boats
Outboards • Snowmobiles



Pleasure Boats

Hourly • Daily • Weekly

Weekend Sales,
Service, Parts Available



Fishing Boats



Canoes



Aqua Cycles

200,000 sq. ft.
of Heated Indoor
Showroom

AMERICAN MARINE & MOTORSPORTS



LARGEST SHOWROOM IN THE MIDWEST
OPEN 7 DAYS A WEEK

715-526-4300

830 E. Green Bay St., Shawano or W6343 Weber Point Rd., Shawano • www.americanmarina.com

*Menominee County
Emergency Management*

W3269 Courthouse Lane

P.O. Box 279

Keshena, WI 54135

Phone: 715-799-5074

email: swilliams@co.menominee.wi.us



Dear Legend Lake Property Owners:

Summer 2023

It's summer, and it's time to enjoy the outdoors! Like every season, summer brings some things that everyone needs to be aware of, such as high heat. Included in this Smoke Signals edition are some tips to keep you deal with extreme heat. Another great resource for information about "being prepared" is the ReadyWisconsin.wi.gov website.

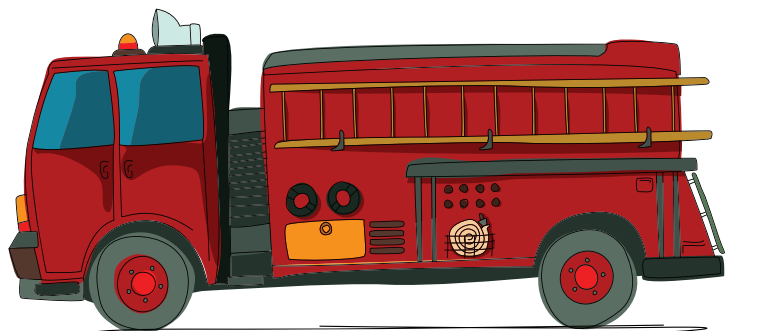
In addition to caring for you and your loved ones, please help look out for neighbors who may be especially susceptible to heat. This includes the elderly and those with medical conditions. And please don't forget to watch out for your pets. They are also susceptible to heat illnesses, so make sure they have a cool place to rest, and have fresh water.

Have a great summer!

Sincerely,

Shelley Williams

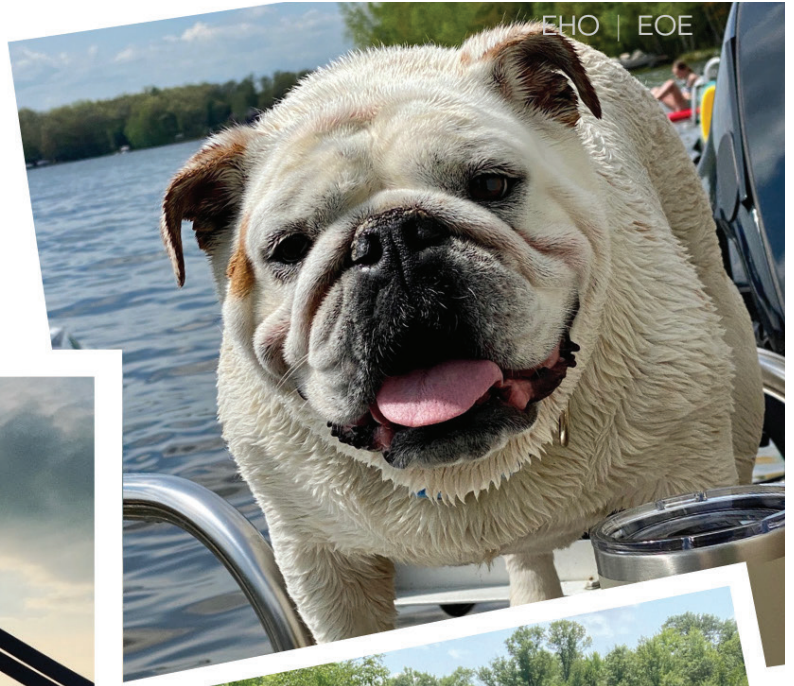
Director
Menominee County Emergency Management



ShoreWEST
REALTORS®



shorewest.com



Experience

LEGEND LAKE



TEAM POWWELS

REALTOR®

☎ 920-713-6212

✉ dpouwels@shorewest.com

🌐 teampouwels.shorewest.com



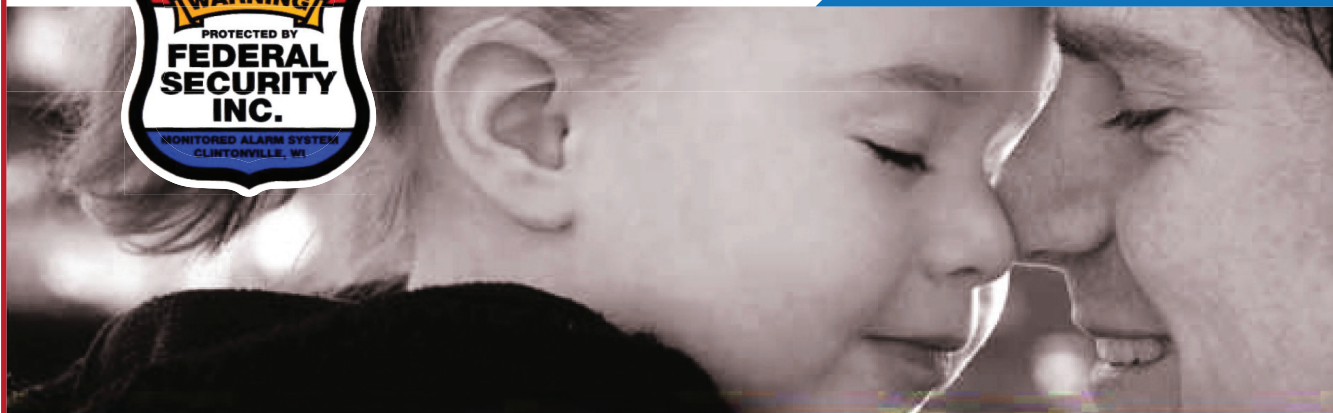
FEDERAL SECURITY, INC

Locally Owned & Operated Since 1983 • Clintonville, WI

You would do anything to make sure she feels safe.
Who is doing that for you?



715-823-3618 • 800-880-3618



Over the past two decades we have grown to be the largest locally owned security company in the Legend Lake area

24/7 Monitoring Services

SECURITY SYSTEM SPECIALISTS

Call Us & Compare Before You Buy



Fire Alarm Systems



Burglar Alarm Systems



Medical Alarm Systems



New Interactive Features Available

Please call for details

Available in Ethernet, Wifi, and 3G Cellular

Basic Monitoring Fees

As Low as \$17.00 per month

\$99.99 Standard System Conversions

Upgrade that old system and reduce your monthly monitoring fee for one low price!

Professional & Personal • Business & Residential • System Conversions • No Maintenance Fees

Extreme Heat

Know the Terms

Heat Wave

Prolonged period of excessive heat, often combined with excessive humidity.

Heat Index

A number in degrees Fahrenheit (F) that tells how hot it feels when relative humidity is added to the air temperature. Exposure to full sunshine can increase the heat index by 15 degrees.

Heat Cramps

Muscular pains and spasms due to heavy exertion. Although heat cramps are the least severe, they are often the first signal that the body is having trouble with the heat.

Heat Exhaustion

Typically occurs when people exercise heavily or work in a hot, humid place where body fluids are lost through heavy sweating. Blood flow to the skin increases, causing blood flow to decrease to the vital organs. This results in a form of mild shock. If not treated, the victim's condition will worsen. Body temperature will keep rising and the victim may suffer heat stroke.

Heat Stroke

A life-threatening condition. The victim's temperature control system, which produces sweating to cool the body, stops working. The body temperature can rise so high that brain damage and death may result if the body is not cooled quickly.

Sun Stroke

Another term for heat stroke.

Heat Facts

Summer heat waves are the biggest weather-related killers in Wisconsin for the past 50 years, far exceeding tornado and other storm-related deaths. In 1995, two major killer heat



waves affected most of Wisconsin resulting in 154 heat-related deaths and over 300 heat-related illnesses.

Citizens of the State of Wisconsin can be seriously affected by severe heat, and it is essential that we increase awareness of the dangers of heat waves and the protective actions which can be taken by citizens.

National Weather Service Heat - Wave Program in Wisconsin

Outlook Statement

Issued 2 to 7 days in advance of when Heat Advisory or Excessive Heat Warning conditions are anticipated. Issued as a Hazardous Weather Statement (HWO). Broadcasted on NOAA Weather Radio All Hazards, and posted on NWS web sites (www.weather.gov).

Heat Advisory

Issued 6 to 24 hours in advance of occasions in which daytime heat index (HI) values of 100 to 104 are expected. Also, a Heat Advisory will be issued for situations in which daytime heat index (HI) values of 95 to 99 are expected for at least 4 consecutive days.

Excessive Heat Watch

Issued generally 12 to 48 hours in advance of occasions in which daytime heat index (HI) values are expected to be 105 or higher and night time HI values will be 75 or higher for at least a 48-hour period.



Extreme Heat

Excessive Heat Warning

Issued 6 to 24 hours in advance of occasions in which daytime heat index (HI) values are expected to be 105 or higher and night time HI values will be 75 or higher for at least a 48-hour period. Also, an Excessive Heat Warning will be issued for situations in which daytime heat index values will be 100 to 104 for at least 4 consecutive days.

During a Heat Emergency

Never leave children, disabled persons, or pets in a parked car – even briefly. Temperatures in a car can become life threatening within minutes.

Keep your living space cool. Cover windows to keep the sun from shining in. If you don't have an air conditioner, open windows to let air circulate. When it's hotter than 95 degrees, use fans to blow hot air out of the window, rather than to blow hot air on to your body. Basements or ground floors are often cooler than upper floors.

Slow down and limit physical activity. Plan outings or exertion for the early morning or after dark, when temperatures are cooler.

Drink plenty of water and eat lightly. Don't wait for thirst, but instead drink plenty of water throughout the day. Avoid alcohol or caffeine and stay away from hot, heavy meals.

Wear lightweight, loose-fitting, light colored clothing. Add a hat or umbrella to keep your head cool... and don't forget sunscreen!

Don't stop taking medication unless your doctor says you should. Take extra care to stay cool, and ask your doctor or pharmacist for any special heat advice.

Taking a cool shower or bath will cool you down. In fact, you will cool down faster in a cool shower or bath faster than you will in an air-conditioned room! Also, applying cold wet rags to the neck, head and limbs will cool down the body quickly.

People at higher risk of a heat related illness include:

- ◆ Older adults
- ◆ Infants and young children
- ◆ People with chronic heart or lung problems
- ◆ People with disabilities
- ◆ Overweight persons
- ◆ Those who work outdoors or in hot settings
- ◆ Users of some medications, especially those taken for mental disorders, Movement disorder, allergies, depression, and heart or circulatory problems
- ◆ People who are isolated who don't know when or how to cool off – or when to call for help



**COLDWELL
BANKER**
REAL ESTATE GROUP



**COLDWELL
BANKER**
REAL ESTATE GROUP

Let's talk about real estate...

Kristin Allen

715-903-6520

TOGETHER - WE ARE LEGEND LAKE

**Creator of Walk the Lake, Bike the Lake and Paddle the Lake.
Board member of your LLPRD, Responsible Boating
Committee and Social Committee**

TIMBERLAND INVASIVE SPECIES

Greetings, Legend Lake Community!

Summertime is the best time to identify invasive species. Some invasives, like garlic mustard and exotic bush honeysuckle, begin to green-up in the spring. However, many begin to grow later into the summer. Spotted knapweed begins to green-up as early as May but can be easily spotted in June and July when it is flowering.

Spotted knapweed is an herbaceous, perennial plant that forms a rosette for up to four years. Following the rosette stage, the plant bolts, and forms flowers. The flowering plant typically has one to six stems and ranges in height from two to four feet tall. The rosette leaves are a gray-green color that grow up to six inches long. The leaves are deeply divided and covered in rough hairs. Leaves near the bottom of the flowering stem resemble those of the rosette but leaves become small and linear as they travel up the stem. A great way to identify spotted knapweed is through its flowers. The flowers are pink or purple and look like thistle flowers. The flowers bloom from mid-summer to early fall.

In the Legend Lake area, spotted knapweed is often found along roadsides. If you think you have seen spotted knapweed growing along roadways or on your property, let Timberland Invasives Partnership know. Through U.S. Forest Service Great Lakes Restoration Initiative grant funding, TIP is able to inventory and control invasive species in the area. We are able to continue work to minimize invasive species infestations within the community.

To stay up to date with our activities and events, check out our Facebook page and website. Also, email or call our coordinator about any suspect invasive species.

Enjoy the sunshine!

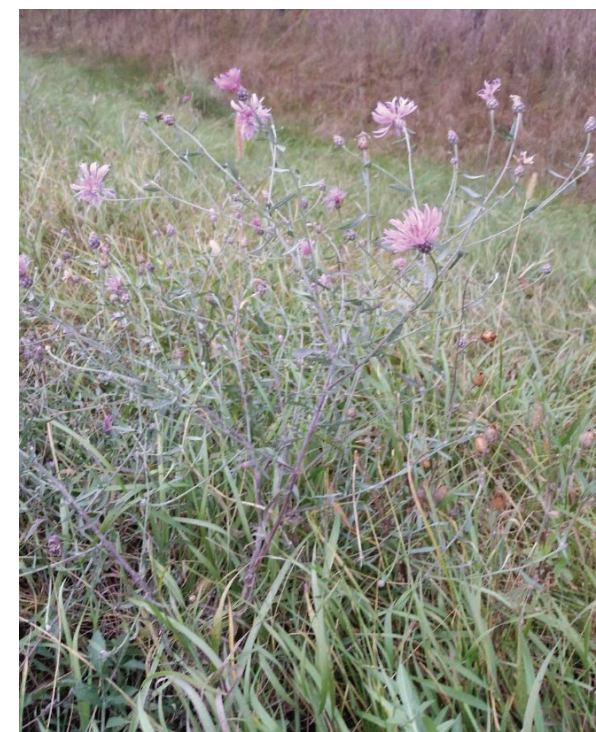
Abby Vogt

Coordinator, Timberland Invasives Partnership

timberlandinvasives@outlook.com

(715) 799-5710 x3

Timberlandinvasives.org



Top image: Spotted knapweed rosette (Elizabeth J Czarapata)

Lower image: Flowering spotted knapweed (Timberland Invasives Partnership)



(920) 788-0220
www.kenssports.com

W2520 COUNTY HWY JJ
KAUKAUNA WI, 54130



WISCONSIN'S LARGEST MOTORSPORTS DEALER!

THE DEALER WITH THE EXPERTISE IN SERVICE & THE PERSONAL TOUCH YOU DESERVE!

OVER 100
PONTOONS
IN-STOCK



CREST



PRE-BOAT
SHOW SALE
GOING ON
NOW!

CRESTLINER

CYPRESS CAY

Swift Chaser

THE WORLD'S
LARGEST
CRESTLINER &
TRITON BOATS
DEALER!

PRE-BOAT
SHOW SALE
GOING ON
NOW!



BAYLINER

WISCONSIN'S
LARGEST
MERCURY
DEALER



**Triton
BOATS**

SERVICING ALL MAKES AND MODELS OF OUTBOARDS & BOATS

- STORAGE • WINTERIZATION • CUSTOMIZATION • PROPS
- TROLLING MOTORS • DEPTH FINDERS • ACCESSORIES

WHAT DOES SMOKEY'S FIRE DANGER RATING MEAN?



Photo credit: Wisconsin DNR

FIRE DANGER RATING	POTENTIAL FIRE BEHAVIOR AND RECOMMENDED ACTION
LOW	<ul style="list-style-type: none"> Wildfires do not easily ignite and will spread slowly. This is the safest time to burn, especially when the ground is snow-covered.
MODERATE	<ul style="list-style-type: none"> Wildfires can ignite and will spread but are relatively easy to contain. Use caution if burning and never leave fires unattended.
HIGH	<ul style="list-style-type: none"> Wildfires ignite easily, spread rapidly and can be challenging to control. Burning is not recommended, especially during the day. Burning restrictions may be in effect; hold off burning for a safer day.
VERY HIGH	<ul style="list-style-type: none"> Wildfires start easily, spread rapidly with increased intensity and are difficult to control. Burning is not recommended. Burning restrictions in effect; check embers from previous burns to prevent rekindling.
EXTREME	<ul style="list-style-type: none"> Wildfires start easily, spread furiously, burn intensely and are very difficult to control. Burning is strongly not recommended. Burning restrictions in effect; avoid any outdoor activity that can cause a spark.

Tiny URL: To learn more fire safety tips, visit <https://dnr.wi.gov/tiny/83>

This project was funded by a grant from the USDA Forest Service. This institution is an equal opportunity provider.



SHAWN ELLIOTT FLOORING

**FULLY
INSURED!**

(920) 590-0940

**FREE
ESTIMATES!**

10+ YEARS IN BUSINESS



ARE YOU THINKING ABOUT UPDATING YOUR HOME OR CABIN? MAYBE YOU'RE ON THE FENCE?

GIVE SHAWN A CALL AND SET UP A MEET - N - GREET! DURING THIS TIME, YOU CAN GET TO KNOW SHAWN AND HE WILL MEASURE THE AREA TO RECEIVE NEW FLOORING.

SHAWN IS VERY KNOWLEDGEABLE, AND MORE THAN WILLING TO WORK WITH YOU ON THE WHOLE PROCESS.

HE TAKES GREAT PRIDE IN HIS WORK, KNOWING THAT THE END PRODUCT WILL RESULT IN YOUR HAPPINESS!

PLEASE SEE OUR FACEBOOK PAGE FOR REVIEWS AND COMMENTS FROM PAST CUSTOMERS!

THANK YOU FOR THE OPPORTUNITY TO LET US HELP YOU MAKE YOUR HOUSE A HOME!!

Shawn & Angela Elliott

Take a Hot Minute to

LEARN BEFORE YOU BURN

to Prevent Wildfires



DEBRIS BURNING

is the no. 1 cause of wildfires in Wisconsin.

#1



STEP 1

Get a DNR annual burn permit!
It's free. It's easy.

dnr.wi.gov, search "wisburn"



STEP 2

Check the daily burn restrictions after 9 AM to see if burning is allowed.



STEP 3

Pay close attention to permitted burning hours and any size limitations.

Follow the rules and safety tips on the burn permit.



Go the extra mile to make sure fires are completely out.



dnr.wi.gov, search "wisburn"



Serving Shawano County & surrounding areas, including Bonduel, Cecil, Keshena, Weston, Legend Lake, New London, Red River, and Green Bay. We also serve the Fox Valley!

LOCAL PEST CONTROL PROFESSIONALS



WE'LL TAKE CARE
OF WHAT **BUGS** YOU!



WHAT WE DO

- ✓ Residential & Commercial
- ✓ Exteriors & Interiors
- ✓ Basements & Garages
- ✓ Bed Bugs Inspections & Treatments
- ✓ Mosquitoes & Ticks Events & Programs
- ✓ Spiders & Roaches
- ✓ Carpenter Ants, Red Ants, Ground Ants
- ✓ Wasps, Bees, Hornets
- ✓ Fleas, Box Elder Bugs
- ✓ Centipedes, Millipedes, Earwigs, Silverfish
- ✓ Asian Beetles, Japanese Beetles, Lady Bugs
- ✓ and many other types of invaders!

SCHEDULE YOUR SERVICE TODAY!

(715) 851-1543

Visit: BugsBewarePestControl.com

WisBURN

Full-service mapping application for all things BURNING in Wisconsin



FIRE DANGER:

View the current fire danger across Wisconsin in real-time, as conditions change. Modify activities that can cause a spark in the outdoors.



DNR BURN RESTRICTIONS:

Planning to burn? Find out if a DNR burn permit is required at your burn location—get a burn permit online. Then, after 9 AM, view current DNR burn restrictions.

WILDFIRES:

Monitor the status of any reported and developing wildfires currently active in areas where the DNR has suppression responsibility.

PRESCRIBED BURNS:

Observe the land management goals and status of any in-progress DNR-managed prescribed burns.



View this application at: apps.dnr.wi.gov/wisburn

Sport Shop & Repair

Hwy 47 Bonduel • 715-758-2244



The Spirit of Quality ...

AMERICAN DOCK MFG. INC.

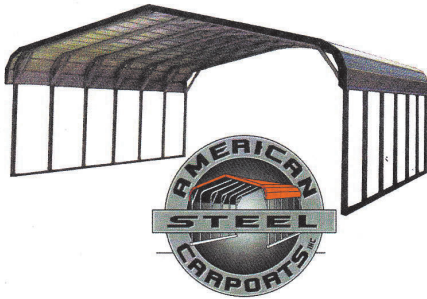
Huge Display of
Boat Lifts &
Aluminum Docks



YAMAHA

Outboards
on Display

*"Hundreds ready
for purchase"*



Carports on Display

Huge
STORAGE
*For Your
Year 'Round
Recreational
Needs*

"Trades Welcome"



**Pontoon
Re-Decking**

**This Changes Everything
Reliable & Innovative**

We're
#

**Sport
Shop
&
Repair**
Sales
&
Service

Bonduel, WI
715-758-2244



On-Hand
Full-Time
Certified Techs
Largest

parts department
in NE Wisconsin
New • Used • Aftermarket
parts for outboards
& snowmobiles



"Your Parts Store"

FAMILY OWNED AND OPERATED SINCE 1970

Email: sportshop@athenet.net • www.sportshopandrepair.com

SOCIAL EVENTS

ROMEO

Now that the snowbirds are slowly coming back, we will be picking up in numbers. So if you want to meet some of the guys on the lake and get caught up with what is happening, come join us, we meet every 2nd and 4th Wednesday of the month, unless notified otherwise, we have been meeting at local bars in the area, until we find a home. Come join the fun, Romeo's stands for Real Old Men Eating Out. So bring your appetite and wet your whistle with us, bring a friend or friends, we are open to all who would like to join us. It is a good way of staying connected to what is going on.

If you want to know where we are going to meet next give me a call at 715-799-4803 or drop me a line at jimskomski@gmail.com.



Until then be safe.

Jim Skomski

LADIES LUNCH

Ladies Lunch meet on the third Thursday of each month at 11:30 am. All women are invited. Please sign up at the Lodge Office each month if you plan to attend. The schedule is as follows:

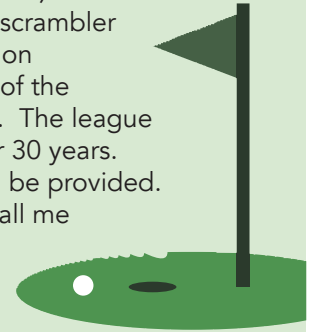


<u>DATE</u>	<u>LOCATION</u>	<u>HOSTESS/PHONE</u>
June 22	TBD	Elaine Noel, 3567
July 20	TBD	Diane Ireland, 715-280-0210

GOLF

Attention Golfers (Guys and Gals): Join us in a great two person scrambler league. We play at Pine Hills on Thursday at 11:00 AM. Most of the golfers are from Legend Lake. The league has been in existence for over 30 years. If you need a partner, one will be provided. If you are interested, please call me at 715-799-3154.

Tom Moutvic
League Commissioner



WANTED



Fun loving people to join the Social Committee to help bring the Legend Lake community together. Join us and forge new friendships and help raise money to support local causes and organizations.



SUNDAES ON SUNDAY

CRAFT FAIR



NIGHT ON THE TOWN

TRUNK OR TREAT



CONCERT ON THE DECK **CHRISTMAS FOR FAMILIES**



LEGEND LAKE



For more information email Jewell Ehlert at ehlertj59@gmail.com



CRAFT DAY

Are you interested in crafts?
(Quilting, Knitting, Crocheting)

Join the group every Wednesday morning from
9:00 A.M. to Noon or the second Thursday of
each month from 9:00 A.M. to 2:00 P.M.
at the Legend Lake Lodge.

For more information
contact Lois Roberts at 715-799-3330.

CARDS & BOARD GAMES



Sheepshead is played
Wednesday 9:00 am till Noon
and Thursday 6:00 pm till 10:00
pm at Legend Lake Lodge.

If you have a different card
game or board game,
everyone is welcome,
meet your neighbors.

Join us for an Adult Game/Card Night



GAME Night



WHEN: 1ST AND 3RD WEDNESDAY MONTHLY
WHERE: *GREGG & DEB MALMSTROM RESIDENCE
@ 7:00PM

Enjoy

BOARD GAMES - CARD GAMES - DICE GAMES
SNACKS PROVIDED - BRING YOUR BEVERAGE OF CHOICE

**FOR MORE INFORMATION OR TO
RSVP:**

CALL/TEXT DEB: 414-303-7604

*HOST HOUSE SUBJECT TO CHANGE, IF YOU'RE INTERESTED IN
HOSTING PLEASE CONTACT DEB.

SOCIAL EVENTS
— SAVE THE DATE —

CONCERT ON THE DECK

Saturday
July 29th
1-4 pm

On Saturday, July 29th the Social Committee is sponsoring Concert on the Lodge Deck, rain or shine.

Come by boat, canoe, or inner-tube to enjoy the music of Steve Arnold.

This event will also be a fund raising event for the Menominee Co. K-9 unit.

Have lunch or an early dinner.

The K-9 committee will be selling food to help fund Ruger.

Come ashore and help fund a great asset to the Community. He is sponsored only by private donations, no tax levy dollars are used to maintain this wonderful K9.

Please stop & make a donation or purchase a meal. Hope to see everyone on Saturday.

Lisa Wilson
Social & K9 Committee

SOCIAL EVENTS
— SAVE THE DATE —



**sundaes
on Sunday**

June 25

July 16

August 19

1:00 - 3:00 pm

at Legend Lake Lodge

The Knowledgeable Professionals

**of Radtke
REUTER
ELECTRIC LLC**

617 S. Main Street
Shawano, WI 54166

715-526-3811

MAULE
CONSTRUCTION LLC

Cecil, Wisconsin

Members of:


CAPS
Certified Aging-In-Place Specialist

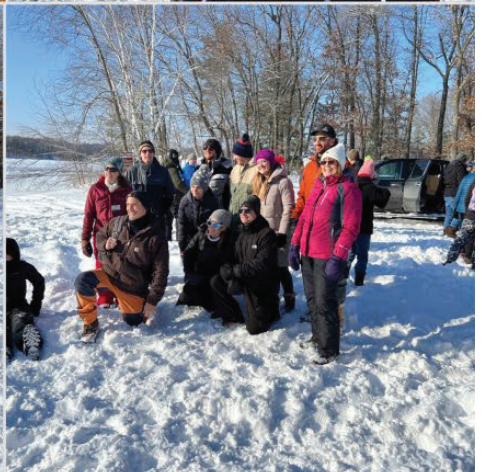
John Maule
Licensed & Insured

W: www.mauleconstruction.com
E: mauleconstruction@gmail.com

715-745-2256
Cell: 715-853-6826

New Construction | Remodeling | Additions
Roofing | Siding | Garages | Decks

Walk the Lake 2023



FALL CRAFT & BAKE SALE

SHOP EARLY FOR THE HOLIDAYS
MANY WONDERFUL VENDORS

SATURDAY, OCTOBER 21st
2023

9:00 – 2:00
LEGEND LAKE
LODGE



COFFEE & CINNAMON ROLLS AND
LUNCH AVAILABLE
LEGEND LAKE LODGE
OLD SOUTH BRANCH ROAD
KESHENA
CALL FOR DETAILS
715/799-3317

HOPE TO SEE YOU !

\$ 1.00 DONATION AT THE DOOR



Fireworks Can Spark **WILDFIRES**



*The safest way to enjoy
fireworks is to attend a
professional show.*



YOUR DOCK & LIFT HEADQUARTERS!



20 years of *experience* and one of the *top 100 Dealers* in the Nation!

ShoreMaster Wood Grain Aluminum Decking

Beauty, Elegance, and Maintenance Free



**We Sell,
Install
& Remove
ANYWHERE!**



ShoreMaster's Wood Grain Aluminum Decking has been powder-coated, so it looks like real wood but is made out of aluminum. So there is no upkeep or maintenance like you would have with real wood panels. And because it is made out of aluminum, ShoreMaster's Wood Grain Aluminum panels will not rust or corrode. They are extremely lightweight and can withstand the heaviest of foot traffic.

Go ahead, take a test walk on the ShoreMaster Wood Grain Aluminum Decking today!

ShoreMaster ShorePort PWC Lift

The ShorePort is the most effective way to dry-dock your personal watercraft. It's one-piece, simple design makes it tough enough to withstand constant abuse. The ShorePort uses a three-roller system to get your PWC up and out of the elements with a simple flick of the throttle.



"Best Price, Service and Selection in the Midwest"

Showroom:

830 E. Green Bay Street
Shawano, WI 54166
generalmail@americanmarina.com

Parts/Service:

1100 E. Green Bay Street
Shawano, WI 54166
parts@americanmarina.com

Marina/Rentals

W6343 Webers Point Road
Shawano, WI 54166
generalmail@americanmarina.com



Nationwide award winner in sales and service!

Call us at: 715-526-4300
866-955-BOAT (2628)

www.americanmarina.com



Condolences

John Calvin

Legend Lake Owner in Great Bear

Passed away in May 2023

Thomas Van Lieshout

Legend Lake Owner in Running Bear

Passed away in April 2023

Paul Towler

Legend Lake Owner in Bowstring

Passed away in May 2023

Patricia Schraeder

Lived in Spirit Ridge Addition

Passed away in March of 2023

Daniel J. Schultz

Legend Lake owner in Spirit Island

Passed away in February 2023

Betsy Pedersen-Hill

Legend Lake owner in Great Bear

Passed away in May 2023



unique gifts boutique items

**Dreier Pharmacy
& Gift Shoppe**

117 S. Main St., Shawano
715-526-2011

clothing accessories



Olson's Rural Electric Inc.
Commercial • Residential • Farm Wiring

Dick Olson

Cell: 715-853-6622 dick@olsonsruralelectric.net
Office: 715-823-6882 N2810 Circle Drive
Fax: 715-823-2550 Clintonville, WI 54929

Automatic Stand-By & PTO Generators

KOHLER
POWER SYSTEMS

Partnered with: **focus on energy**
The power is within you.

Please let the Legend Lake office know of any past or present Legend Lake property owners that have passed away for future issues of the Smoke Signals.





A+ Air Conditioning & Heating Co.

Fast,
Friendly, Reliable

**24 Hour
Emergency
Service**

SERVICE ALL
MAKES & MODELS

Licensed & Insured

John Tucker
HVAC Specialist
Legend Lake Resident

715-584-7471



AL'S LAWN CARE

Alan Barnick
owner

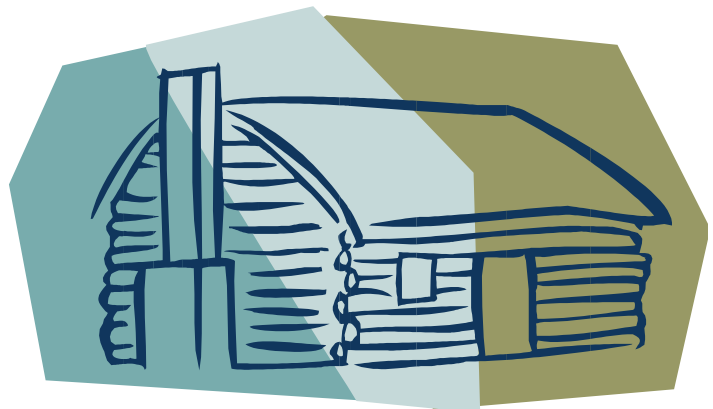
W6777 Curt Black Road
Shawano, WI 54166

Cell: 715-853-8104
backwoods54@gmail.com

Lake Country Log and Cedar

Proudly Serving Legend Lake for over 15 Years!

- Caulking & Chinking
- Wood and Cedar Staining
- Deck Care
- Log Stripping
And Refurbishment
- Media Blasting
- Fully Insured
- Pressure Washing



www.lakecountrylogandcedar.com

Call (715) 851 3410 for a Free Estimate

Legend Lake Classifieds

If you are a member of the Association in good standing, we are creating this page to allow you to advertise for free. This is not intended for businesses, it is for individuals wanting to buy & sell items they can no longer use. You will be limited on the size and no photos and graphics. Just a very short description and contact information. The LLPOA Board has final say on all submissions. Please send your requests to the Lodge office email or drop it off. llpoa@legendlake.info.

Buying

Anything hunting/fishing/ camping, Related firearms/ammo/ knives 715-851-1860

Will Buy Anything from A – Z "Soup to Nuts", guns, ammo & animal traps. 715-853-7002

Looking to buy an additional lot on Legend Lake – on or off shore- Karen - 715-851-8088

Want to stop paying taxes for a lot you don't need? I could buy one inexpensive off water lot. You can send a text or leave a voice mail - 260-265-0183. Thank you, have a good summer.

Selling

Cribbage Boards Many different Styles
920-921-2628 Legend Lake

Shore Station Aluminum Boat lift with wheel kit 3600 lb. capacity, \$1,000
Call Marty – 262-349-3291

18ft. Pontoon Boat, 35 hp Johnson (less than 10hrs.) New vinyl seats & consol covering (completed August 2017) Fish locator, seat covers, Pontoon trailer Come & see.. Best Offer
715-799-4012 ask for Mick

Trolling Motor – Minn Kota Bow Mount Auto Pilot 60 inch Shaft 65 lbs. thrust, 24 volt
\$200.00 OBO Larry 715-799-3280

Two 12 ft. Arcadia Kayaks & paddles Sheppell ice fishing fold-out shanty Ariens 7hp rotary snow blower Sunfish sailboat- mast & center board & tiller Call Bob 920-494-6852

Ski Boat 17.5 ft. Forester 1988, open bow, runabout with 120hp Evinrude With trailer, Just keeps on running! \$3,000
Call Patrick 920-680-2500

Rave Aqua Jump Water Trampoline Model 150, Excellent Shape Includes launch pad & log
\$2,000 Call John 920-360-5867

Two Sunfish Sailboats – Fully Equipped \$500.00 each (or best offer) Call Mary at 920-435-6046

Vermont Tubbs Wood Snowshoe Kits Complete Kits for two pairs, Great for use or décor
\$100 for both pairs (or best offer)
Call Donna at 920-851-3140 or text

Divine Savior LUTHERAN CHURCH



Proclaim Christ! Embrace His Word! Share His Love!

SERVICE TIMES:
Sunday Morning
11:00am



www.divinesaviorshawano.org
Facebook: DivineSaviorShawano
Email: dsoffice@divinesaviorshawano.org

102 Northridge Dr., Shawano, WI 54166 • (715) 526-6880
On the corner of Northridge Drive and Main Street.

Storage Specialists, LLC

715-524-5017

Storstuf1@yahoo.com



Marine & Recreational Vehicle Repair
State Licensed & Insured Storage Facility
Pick Up & Delivery Services

* Mention This Ad & Receive 10% Off Snowmobile or ATV Tune UP*

W7753 Pine Lane, Shawano, WI 54166

Hometown Real Estate & Auction Company

Clayton McHugh
Broker/Auctioneer
715-853-8638

Lisa Peach-Wilson
Broker
715-853-9227



To assist with all your
real estate needs in the area
& surrounding lakes.

Comfort that can fit into any budget.

With a full line of best in class home comfort systems,
a Carrier System can fit into any home budget.

TRUST THE EXPERTS

- Over 65 years in business
- Only factory authorized Carrier dealer in Area
- Energy Star products • Community Involved
- Nate Certified & Professionally trained
- Affordable service rates • 24 Hour Service
- Courteous & Experienced Technicians



KNOPPE
HEATING & AIR CONDITIONING

NEW LOCATION
1473 E. Green Bay St • Shawano
715-524-4215
www.knopevac.com

**INTEREST FREE
FINANCING AVAILABLE!**



*With payment in full in 36 months, some restrictions apply. See store for details.



New Owners to Welcome to Legend Lake

60 Brave Island
Leo & Karen Dillenburg
Clintonville, WI

34 Tall Moon
Dave & Karen Van Boogard
Appleton, WI

40 Honey Tree
Tim Eckes
Appleton WI

32 Spirit Ridge
Brandon Lesar
Sheboygan, WI

1 Whispering Pines
Heidi Thompson
Greenville, WI

23 Fox Ridge
Jason Knops
Shiocton, WI

44 Brave Island
Ryan Sara Hartman
Appleton, WI

23 Medicine Hat
Kevin & Michele Kubiak
Pulaski, WI

12 & 13 Hawks Nest
Ryan Forbey
Shawano, WI

3 Hawks Nest
Denise & Oscar Villalobos
Kenosha, WI

2 Wood Duck
Todd & Liz Spindler
Keshena, WI

17 Tall Moon
Dan & Cathy Ludwig
Keshena, WI

20 Hawks Nest
Russell & Brenda Leopold
Appleton, WI

55 & 56 North Star
Nathan & April Scofield
Seymour, WI

28 Mallard Bay
John & Dawn Pankow
Brookfield, WI

33 & 34 Great Bear
Michael Goltz
Appleton, WI

59 Wood Duck
Jean Marie Carini
Menominee Falls, WI

62 Morning Star
Peter Ermis & Kasey Eisch-Ermis
Oconto Falls, WI

45 Council Hills
Serge & Gerdine Ulysse
Chicago, IL

30 Honey Tree
John & Chris Lalande
Madison, WI

13 Running Bear
Shane Ziesmer & Michelle Nelson
Hortonville, WI

2 Lodge Pole
Adam & Terra Behnke
De Pere, WI

46 Grey Eagle
Kevin & Kate Lewis
Muskego, WI

10 Morning Star
Jeffrey & Janessa Pierce
Mequon, WI

New Storage Facility



Easy access from BE onto S. Jefferson St or 1/2 mi. N of Hwy 29

Book Online: brkstorageinc.com
brkbonduel@gmail.com

BEAT THE HEAT

Keep your family cool and comfy this summer!

Schedule your annual A/C maintenance today!



Montour-Engel, LLC

Heating & Cooling

137 S. Washington St. / Shawano, WI 54166

715-526-3620 / Info@montour-engel.com



KRISTIN ALLEN
 715-903-6520



COLDWELL BANKER
 REAL ESTATE GROUP

Mosquitoes & Ticks

How To Protect You & Your Family

People who are bitten by disease-ridden mosquitoes sometimes never knew they were bitten until the fevers start or other symptoms arise, but mosquitoes can spread many diseases to both people and pets through their bites. Amongst those diseases are the Zika virus, West Nile virus, and even Malaria. Pets may acquire heartworm disease, which can be deadly.

Ticks are also dangerous to people's health. Like mosquitoes, not every tick bite produces exposure to diseases, but it is far better to be safe than sorry. Ticks can carry Lyme disease, and even though seldom the case, Rock Mountain Spotted Fever, along with a host of other viruses and bacterias.

Stalking, Reproduction & Infestation

Mosquitoes easily stalk people by tracking the heat they emit and the carbon dioxide they exhale. Mosquitoes can smell carbon dioxide from 100' away and quickly find them with wings that beat 600+ times per second.

Ticks find their hosts in a variety of ways. They detect body odors, and sense body heat, moisture, and vibrations. Some tick varieties lay in wait along pathways.

Mosquitoes are generational bugs. Each mosquito can lay upwards of 300 eggs every 21 days and the 300 eggs can in turn lay upwards of 300 eggs each in the next 21 days. Mosquitoes hide in outdoor areas, but also like to nest within and under furniture, under the leaves of trees and bushes, and on standing water.

Ticks can lay their eggs in the spring and the fall. They reproduce with less frequency than mosquitoes, but they produce many more dangers within the home. Ticks can easily 'hitch a ride' into a home making nest near the baseboards, along window and door surrounds, within furniture, under the edges of rugs, and even in curtains.

Getting Rid of Mosquitoes & Ticks

Do bug sprays rid your yard of mosquitoes and ticks? According to the University of Michigan School of Medicine, a bug spray with 20% DEET will protect you for about five hours and a spray with 7% DEET will protect you for two to three hours. The sprays must be repeated and only serve to repel mosquitoes, not kill them.

As for ticks, some evidence supports the effects of DEET on ticks, but like mosquitoes, sprays are less effective than professional treatments at both repelling them and keeping them away.

Do yard sprays work better at ridding your yard of mosquitoes & ticks? Like sprays used on a person's body, yard sprays only serve to repel mosquitoes or ticks, not kill them. Some yard sprays can potentially keep mosquitoes at bay for a week or longer, but they are much less effective on ticks.

Are sprays safe? In addition to the issues DEET may cause when directly applied to the skin, both store-bought body sprays and store-bought yard sprays have the potential

to lead to a variety of respiratory issues, cause breathing problems, and contribute to severe respiratory illnesses and diseases, as well as skin allergies. Store-bought sprays are potentially dangerous for those with asthma, whereas treatments by a reputable pest control company won't directly expose asthma sufferers.

What is the best solution to get rid of mosquitoes and ticks?

The best manner in which to rid your yard of mosquitoes and ticks while providing the best possible protection for you and your family is to kill them, not just repel them. Because the proper agents can also contribute to respiratory problems, it is best to hire a highly-reputable pest control company which guarantees their services.

It is also very important to have treatments every 21 days to kill off the next generation of mosquitoes. One treatment will only suffice to get rid of the ones that have hatched from the last batch.

Are professional treatments safe?

Treatments performed by most pest control companies are completely safe for adults, children and pets once they are completely dry. Reputable pest control companies do not spray edible plants, gardens, blooming and flowering

plants and things of that nature.

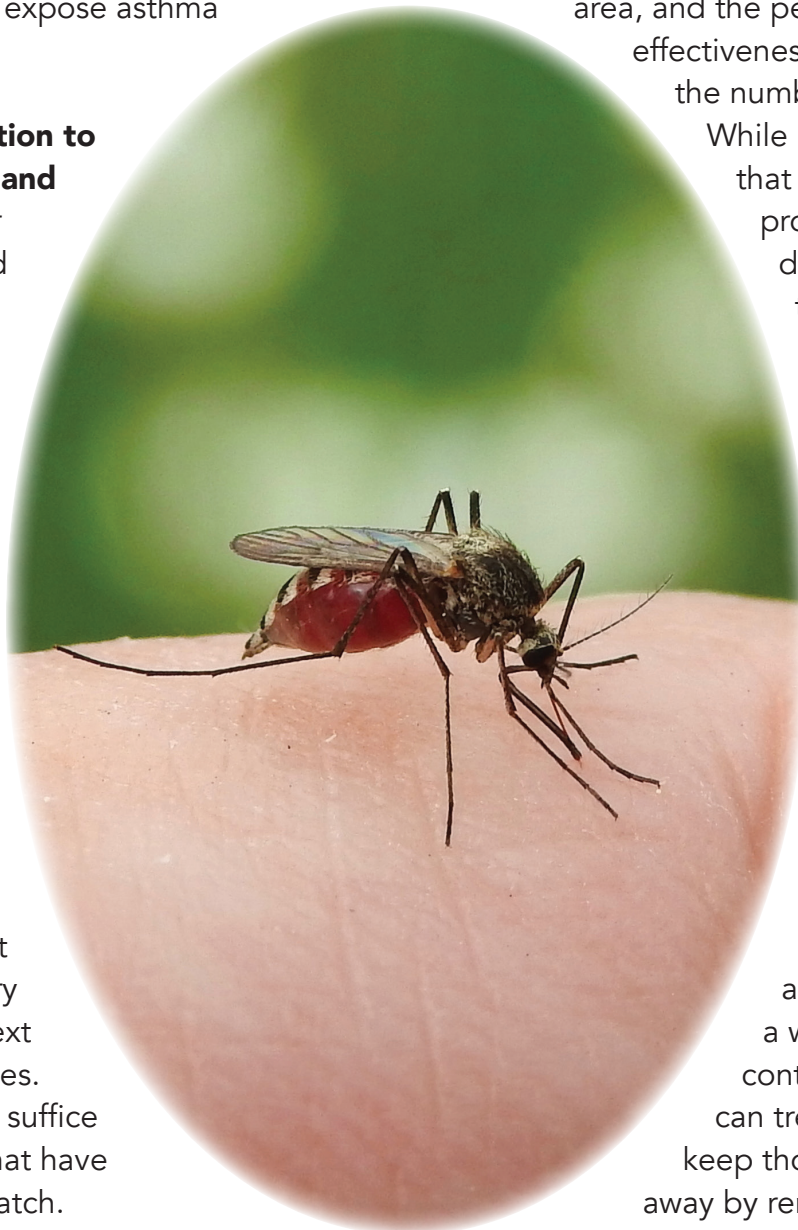
How effective are mosquito and tick treatments?

A treatment eliminates 85-95% of the mosquitoes and ticks in the treated area, and the percentage of effectiveness increases with the number of treatments.

While people report that a single treatment provides a world of difference, it is best to keep in mind that it will not eliminate 100% of the mosquitoes. In fact, not even a program will do that, but a program will provide the best possible experience in your yard.

What can you do to eliminate mosquitoes?

In addition to utilizing a well-respected pest control company, you can tremendously help keep those mosquitoes away by removing all standing water or having it treated, and emptying water caught by toys, buckets, bags, or anywhere it may be trapped. It is also beneficial to remove accumulated lawn, tree and leaf debris, mowing grass short, and keeping wood away from your home.





Listening & understanding, available here.

Idell J Johnston, Agent
207 S Main Street
Shawano, WI 54166
Bus: 715-526-6144
www.idelljohnston.com

As your local agent, I'm *here to help life go right.*® That's why I take the time to get to know you and understand what you really need.
LET'S TALK TODAY.



1706841

State Farm
Bloomington, IL

TAX PREPARATION IN YOUR HOME

IRS & Wisconsin
Electronic Filing
715-799-3154

TOM MOUTVIC

Enrolled Agent
35 Years IRS Experience



Light Pollution

One of the pleasures of coming to Legend Lake and the North Woods, is to enjoy the dark night skies and the ability to see the stars that are hidden by the bright lights of metropolitan areas. In recent times, this pleasure is being compromised by the increasing use of ever brighter LED and whiter lights around the lake.

Where lights are being used, the impact of the lighting on neighbors, including those who may reside on the opposite shore of the lake, should be considered. The impact can be lessened or eliminated by being thoughtful in the selection and use of outdoor lighting.

One of the first considerations is to be certain that any lighting is not directed at neighbors. Light sources should be shielded and directed downward, so that the lighting element itself cannot be seen.

With the evermore powerful and low operating cost LED and similar lighting, the impact of lighting can be intense at quite great distances. Lighting for security purposes can be effective by use of lighting having integral motion sensing that turns on the light when motion is detected. Where security is of primary concern, the use of cameras is also an alternative. Where lighting is used, it's impact on others can be significantly reduced through the use of down lighting that uses shades of other enclosures to direct the light downward over an area.

There are many resources to provide guidance on neighbor and community friendly lighting. One such resource is an organization called International Dark Sky Association-
www.darksky.org

Andersen's

Home Improvements

Residential Expert | 40 Years Experience | The Professional Difference

- Laminate Floors
- Decks
- Kitchens
- Bathrooms
- Carpentry
- Additions
- Remodeling
- Home Repairs
- Siding
- Rec Rooms
- Garages
- Windows & Doors

No Job Too Small

Free Estimates | Quality Results | Reasonable Rates | Licensed & Insured

715. 853. 4430

carpenter195759@yahoo.com

"All calls promptly returned"



– Remodels – Repairs
 – New Construction

Over 24 Years of Experience

Matt Wendland
 715 853 3456

NEEDED...



The Legend Lake Lodge has multiple bookcases for the members to borrow books. This library needs someone to volunteer to keep these books organized and updated.



If interested, stop at the Lodge office and discuss with office staff.

Thank You!

LJ SPERBERG CONSTRUCTION INC.

ROAD BUILDING, LAND CLEARING, BASEMENTS,
 PARKING LOTS, DEMOLITION, SEWER AND WATER,
 SAND, GRAVEL, AND TRUCKING

MEMBER OF:
 WOLF RIVER BUILDING ASSOCIATION
 WISCONSIN BUILDING ASSOCIATION
 SHAWANO CHAMBER OF COMMERCE
 LEGEND LAKE PROPERTY OWNER

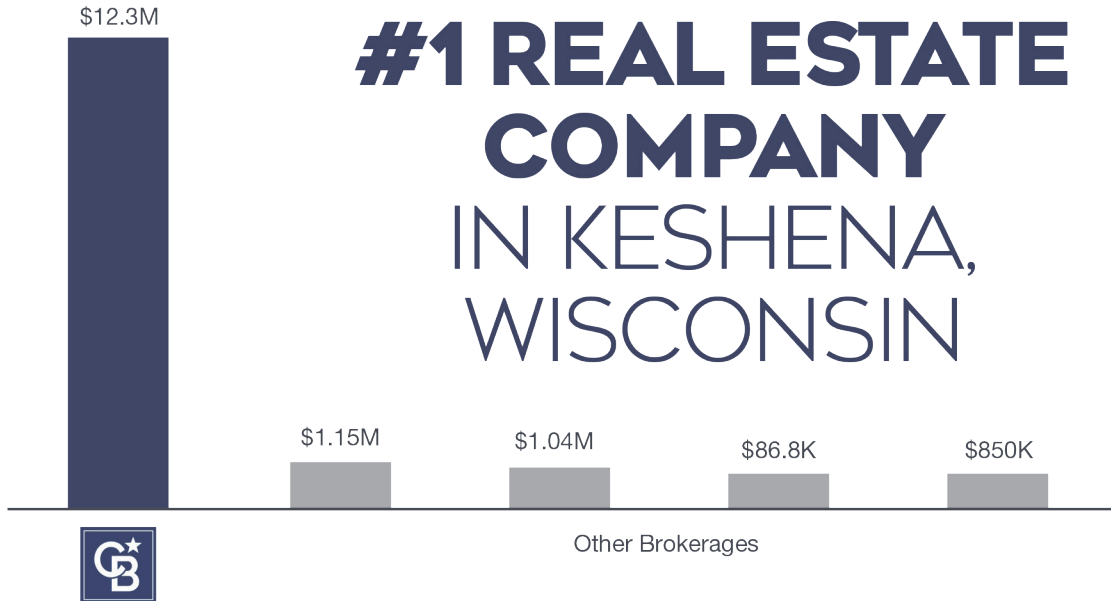
[HTTP://LJSPERBERGCONSTRUCION.COM](http://LJSPERBERGCONSTRUCION.COM)
 W7915 COUNTY RD MMM
 715-524-4263 FAX 715-524-5507

FOR ALL YOUR EXCAVATION NEEDS



COLDWELL BANKER

**REAL ESTATE
GROUP**



#1 REAL ESTATE COMPANY IN KESHENA, WISCONSIN

Sell your property with **LOCAL EXPERTS!** Our agents specialize in residential, waterfront, and recreational properties. Ask us today how we can help with your real estate needs!



Cheyenne Eccles
715-304-7568



Rebecca Hack
715-853-3235



Terry Hilgenberg
715-526-6148



Donna Hobscheid
715-851-5803



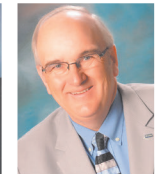
Layla Janssen
715-304-7193



Lynn Johnson
920-209-2283



Jim Kamke
715-853-8324



John Koeller
715-853-6677



Jim Liesner
715-853-1000



Abbi Lonick
715-304-7310



Jade Peebles
715-851-2022



Madison Priest
715-927-7111



Grant Roland
920-765-0909



Sue Sullivan
715-252-6059



Jerry Wendland
715-853-1234



Jim Zierden
715-853-8038

John Miesbauer | Managing Broker | (715) 853-1354

105 S. Washington Street, Shawano, WI 54166 | (715) 526-6148 | ColdwellHomes.com

Based on closed sales volume information from REALTORS Association of Northeast Wisconsin for the Zip Code: 54135 in all price ranges as reported on 2/2/2023 for the period of Jan - Dec 2022, calculated by multiplying the number of buyer and/or seller sides by sales price. Source data is deemed reliable but not guaranteed. Real estate agents affiliated with undefined are independent contractor sales associates, not employees. ©2023 Coldwell Banker. All Rights Reserved. Coldwell Banker and the Coldwell Banker logos are trademarks of Coldwell Banker Real Estate LLC. The Coldwell Banker® System is comprised of company owned offices which are owned by a subsidiary of Realogy Brokerage Group LLC and franchised offices which are independently owned and operated. The Coldwell Banker System fully supports the principles of the Fair Housing Act and the Equal Opportunity Act. 🏠 🏡

Grace Schara, a 19-year-old young woman with Down Syndrome, went to her Lord Jesus on October 13, 2021.

The circumstances surrounding her death have led the family to believe she was taken out by an agenda designed to euthanize non-contributing members of society.

They have filed a landmark lawsuit against Ascension Hospital and the doctors and nurses involved in Grace's death.

Please follow Grace's story by signing up at:

<https://www.graceschara.com/>



When you sign up, you'll receive a link to a website established to honor Grace's wonderful life, host the details of her tragic story, and provide resources for those who are awake to what is happening in the world today.

**Grace's Dad
Scott Schara, President
Our Amazing Grace (tm)
1 Sam 17:47**

Our Amazing Grace is a trademark of Our Amazing Grace's Light Shines On, Inc.



Schmidt

**BOAT LIFTS
& DOCKS**

3 INDOOR SHOWROOMS TO SERVE YOU!

**Hwy 41 – Kaukauna
920-766-0856**

**Hwy 32 – Lakewood
715-276-7788**

**Hwy 10 – Waupaca
715-258-2556**



The Appliance Advisor

Appliance Problems?

Don't Kick It!

Service, Installation & Advice

**Over 20+ Years of Servicing
Your Major Appliances**

Ryan Tucker

theapplianceadvisor@gmail.com

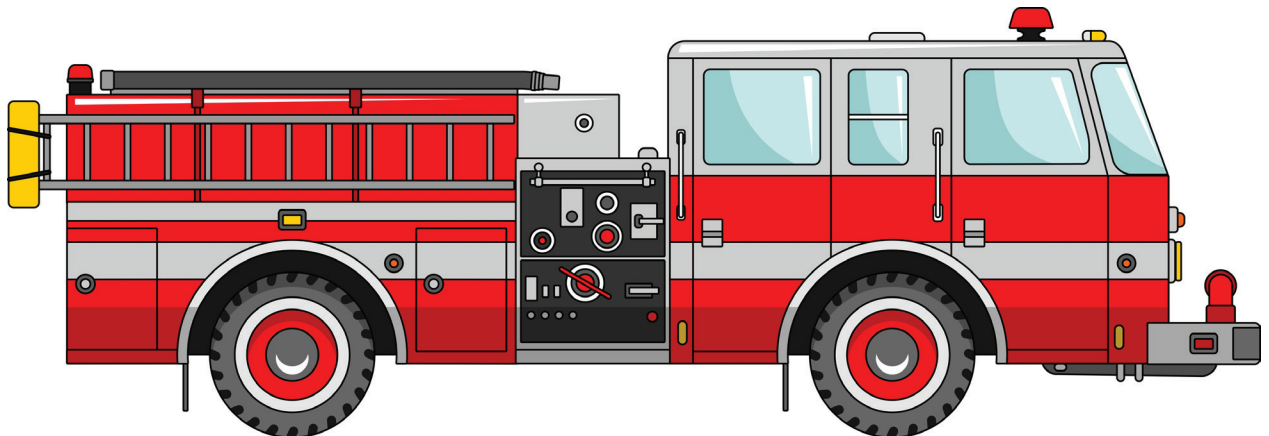
715.850.2151





ADVERTISERS IN THIS ISSUE

A+ Air Conditioning & Heating Co.	61	Ken's Sports	45
Al's Lawn Care	61	Knope Heating & Air Conditioning	63
American Marine & Motorsports ...	16-17, 37, 59	LJ Sperberg Construction.....	70
Andersen's Home Improvements.....	69	Lake Country Log and Cedar	61
Anderson Heating	14	Maule Construction	55
The Appliance Advisor	73	Mick's Watercraft.....	15
Asphalt Specialists.....	26	Montour-Engel	65
Boivin Excavating	21	Olson's Rural Electric.....	60
Brady's Septic Service	10	Peters Tree Service	61
BRK Bonduel Storage.....	65	Radtke Reuter Electric	55
Bugs Beware	49	Sanford and Stump.....	7
Coldwell Banker - Kristin Allen	43 & 65	Schmidt Boat Lifts & Docks	73
Coldwell Banker - Real Estate Group	27 & 71	Schneider & Sons Landscaping	30
Divine Savior	62	Shawn Elliott Flooring	47
Dreier Pharmacy & Gift Shoppe	60	Shorewest - Ludwig	6
Elm Plumbing	70	Shorewest - Pouwels.....	39
Federal Security.....	40	Sport Shop & Repair.....	51
Full House Realty.....	34	Storage Specialists	63
Go2Girl Services.....	11	Three Lil' Birds.....	7
Hockberger Homes	22	Tom Moutvic	68
Hometown Real Estate	63	Werner Pest & Odor Control	25
Idell Johnston - State Farm	68		







Menominee Town/County Boating Law

Town Ordinance #47

- Speed Limit:** No Wake Speed from 6:30 p.m. to 10:00 a.m.
No Wake Speed at all times when less than 200 feet from shore
- Life Preservers:** Personal Floatation Device (PFD) enough for each person on the Boat
- Water Skiing:** Skiers must wear life preservers
Skiing allowed only between 10:00 a.m. to 6:30 p.m.
Ski in counter clockwise direction
Must have two persons in boat – driver attends boat – spotter watches skier
Operator born on or after January 1, 1989 may operate a motorboat only if He or she has completed a boating safety course that is accepted by the Wisconsin DNR.
- High Speed:** Stay 200 feet from all watercraft, swimmers, fishermen & shorelines
- Buoys:** No boats in a designated swim area
No Wake in areas less than 200 feet from shore
Scuba markers indicating underwater swimmer

“Slow, No Wake Speed” means a speed at which a vessel moves slowly as possible while still maintaining steerage control.

KEEP LEGEND LAKE SAFE FOR EVERYONE!!!